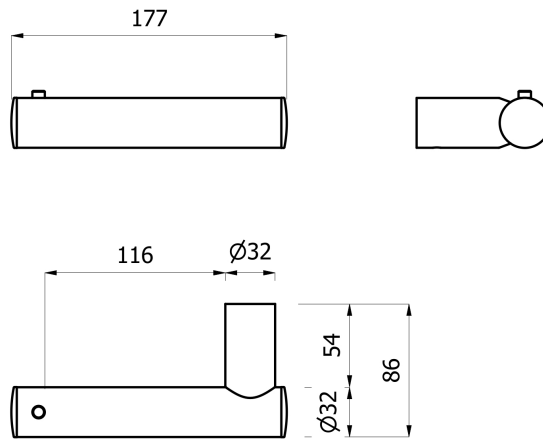
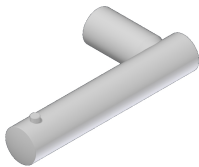


TECHNICAL DRAWING



PHOTO



**PRODUCT FAMILY:** ELEGANCE SERIES

**CODE:** ELPRTBC

**DESCRIPTION:** Toilet roll holder in aluminium and steel painted mat white

**MECHANICAL PERFORMANCES:**

**APPROVALS/CERTIFICATIONS:**

TUV system certification UNI EN ISO 9001

**PRODUCT FEATURES:**

Toilet roll holder in galvanized steel with crossbars and bushing in turned aluminium. Powder coated, mat white. ABS plugs chrome - plated satin.

Diameter of the tubes 32x1,5 mm.

**FIXING/INSTALLATION:**

Wall mounted fixed with n° 1 plugs  
Plugs not included in the package  
Choose the correct type of plug according to the type of wall.  
Hole for screw Ø max 10,5

**MAINTENANCE:**

Check the correct fastening periodically.  
Make a proper cleaning by water and soap, do not use abrasive or corrosive agents.

**PRODUCT COMPOSITION:**

N° 1 Tube Ø32 x 15/10 Fe Po4 galvanized and painted RAL9016  
N°1 Crossbars made of aluminium painted RAL9016  
N° 1 Bushings for fixation  
N° 2 Plugs in ABS chrome-plated satin.

**MATERIALS:**

**TREATEMENTS:**

**TOLERANCES:**

0÷300 ±3 301÷600 ±4 601÷2000 ±5

**PACKAGING OF THE PRODUCT:**

Single packaging in carton box 110 x 40 x 340 mm.

Weight: 0,3 kg

The above mentioned information cannot be considered as binding. Thermomat Saniline S.r.l. reserves the right to make technical and aesthetic changes without any prior notice.

ST_PRODOTTO: ELPRTBC - 1	APPROVATO R.T.
REV.01 DEL 02/03/2023	