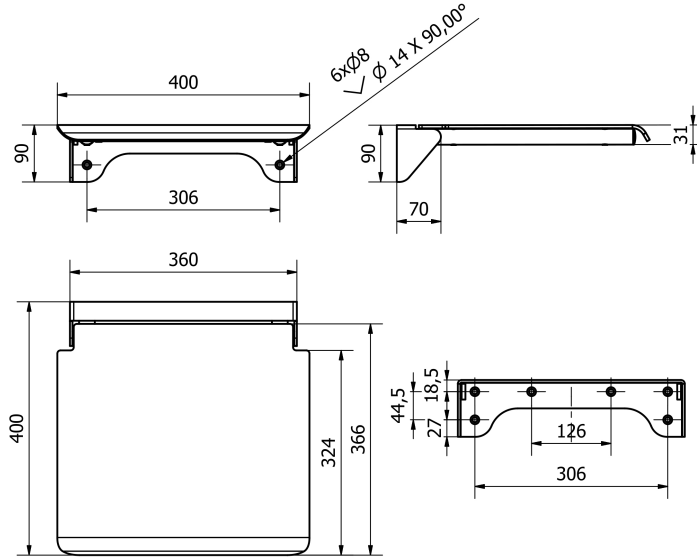
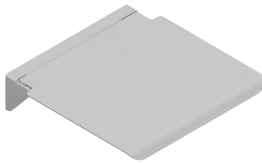


PRODUCT TECHNICAL SHEET

TECHNICAL DRAWING



PHOTO



PRODUCT FAMILY: SEATS FOR SHOWER AND BATHTUB ELEGANCE SERIES
CODE: ELSDBC
DESCRIPTION: Folding shower seat wall mounted made of stainless steel and aluminium

MECHANICAL PERFORMANCES:
 Load capacity 150 kg

APPROVALS/CERTIFICATIONS:
 TUV system certification UNI EN ISO 9001
 Declaration of conformity CE to the European Regulation for Medical Devices 2017/745.
 Reference rules: UNI EN 12182; UNI CEI EN ISO 14971; UNI EN 1041, UNI CEI EN ISO 15225.

PRODUCT FEATURES:

Seat with support and frame made of stainless steel and aluminium seat. Powder coated, mat white. Caps in ABS satin chrome color. Wall bracket in stainless steel bended and welded , diameter of the tube of the frame 25x1,5 e 14x 1,5 mm. Seat made of aluminium sheet thickness 3 mm

FIXING/INSTALLATION:

MAINTENANCE:

Check periodically the correct fixation of the accessories. Make a proper cleaning with water and soap, do not use abrasive or corrosive products.

PRODUCT COMPOSITION:

MATERIALS:

TREATEMENTS:

TOLERANCES:

N° 1 Tray in aluminium painted RAL9016 N° N° 1 Support in stainless steel painted RAL9016 N° 2 Caps in ABS satin chrome

PACKAGING OF THE PRODUCT:

Single package in a single carton box and pluriball 445 x 120 x 530 mm.
 Weight: 4,6 kg