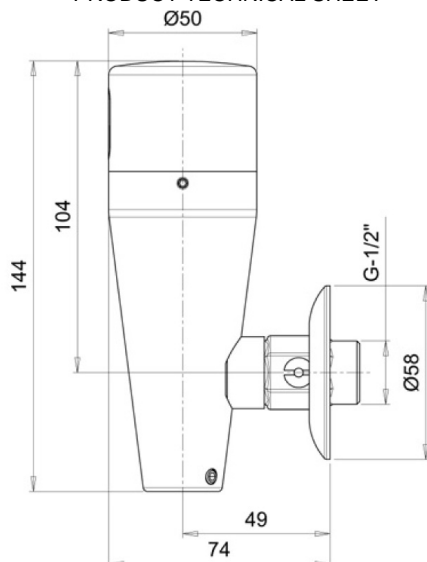


PRODUCT TECHNICAL SHEET

TECHNICAL DRAWING



PHOTO



PRODUCT FAMILY: ELECTRONIC FAUCETS SYNCRO LINE

CODE: RUEL08EB FLASH EXT

DESCRIPTION:

Built-in electronic tap for urinal. Battery powered

HYDRAULIC PERFORMANCES: 3lit. flush.

APPROVALS/CERTIFICATIONS:

TUV system certification UNI EN ISO 9001:2008.

Compliant with provisions of the Electromagnetic Compatibility Directive 89/336/EEC directive and subsequent modifications and additions, based on: IEC 61000/IEC 61000-3-3 Part 3: Section 2,

Section 3; EN 61000-6-2/ EN 61000-6-2 Part 6-2; EN 55022 Class B and with Low Voltage Directive

73/23/EEC dated February 19th 1973 based on: EN 60730/1

PRODUCT FEATURES:

Electronic tap operated by photocell. Suitable for domestic use and for communities or areas for disabled people, electronic faucets allow considerable water savings and a higher hygienic level compared to traditional and self-closing taps. Powered by alkaline 9 V battery.

Through the optional remote control (art.TC) it is possible to adjust the supply time. The operation range can be adjusted manually.

Install the tap at at least 300 mm from the wash basin.

All the products of the Syncro line are designed so that they cannot be damaged by vandals.

The sensors are designed to avoid faucets to be left open (anti-waste and anti-flood function) and to have a maximum 90 seconds operation time; if the sensor is covered for more than 90 seconds (10 minutes for the showers) the water stops automatically. To recover the proper operation, remove any obstacle.

LIST OF PARTS IN THE PACKAGING:

1. Tap 2. 9 V battery 3. Instruction manual

ST_PRODOTTO: RUEL08EB	APPROVATO 1 R.T.
REV.00 DEL 01/04/10	

THERMOMAT SANILINE SRL

Via M. Curie, 7 - 46034 Borgo Virgilio (Mantova) ITALY

Tel. + 39 0376 4473

www.thermomat.com - e-mail: info@thermomat.com



TECHNICAL DETAILS:

Product operation system: Infrared technology
Installation: wall concealed installation
Max. inlet hot water temperature: 70°C
Working pressure: from 0.5 to 8 bar In case of pressures higher than 8 bar, use a pressure reducer
Power: 9V Voltage - Battery

Preset delivery time: 5-6 seconds (adjustable from 3 to 20 seconds)
Activation delay: 3 sec
Factory set actioning distance: 600 ± 20 mm

Flush water quantity: 3 tl.

Battery life: 9V Lithium, approx. 200,000 cycles

Transformer electrical connection : use the provided power or an equivalent one
Solenoid valve electrical connection : use the provided element or another one with the same characteristics
Inlet water connection: ½" G male
Dimensions of wall plate: Ø 50 mm

ST_PRODOTTO: RUELO8EB	APPROVATO 1 R.T.
REV.00 DEL 01/04/10	

THERMOMAT SANILINE SRL

Via M. Curie, 7 - 46034 Borgo Virgilio (Mantova) ITALY
Tel. + 39 0376 4473
www.thermomat.com - e-mail: info@thermomat.com



<p>FIXING/INSTALLATION:</p>	<p>MAINTENANCE: Maintenance of the special and chrome-plated finishings.</p> <p>DO NOT use steel wool or cleaning agents products that contain alcohol, acids, abrasives or similar. The use of any of the prohibited products for cleaning or maintenance could damage the surface of the faucet. To clean the surface ONLY use soap or detergent and water, then dry with a soft cotton cloth. Taps should be protected from sprays of aggressive agents while cleaning the tiles.</p>
<p>PRODUCT COMPOSITION: N° 1 Plate N° 1 Battery N° - Fixing elements - various materials N° 1 Solenoid valve</p>	<p>TOLERANCES:</p> <p>PACKAGING OF THE PRODUCT: Packed in cardboard box 255 x 210x 55mm. - Weight: 1,5 kg</p>

ST_PRODOTTO: RUELO8EB	APPROVATO 1 R.T.
REV.00 DEL 01/04/10	

THERMOMAT SANILINE SRL

Via M. Curie, 7 - 46034 Borgo Virgilio (Mantova) ITALY

Tel. + 39 0376 4473

www.thermomat.com - e-mail: info@thermomat.com

