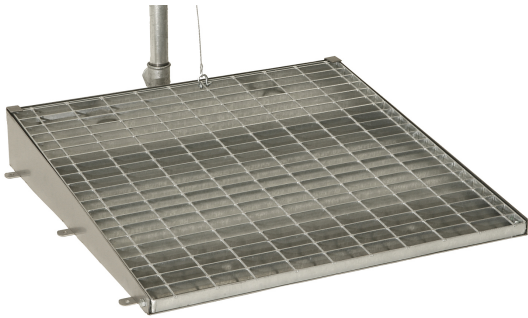


TECHNICAL DRAWING

Disegno non disponibile



PHOTO



PRODUCT FAMILY: EYEWASH AND EMERGENCY SHOWERS

CODE: RICDL03

DESCRIPTION: Floor grid

APPROVALS/CERTIFICATIONS:

TUV certification UNI EN ISO 9001:2008.

Compliant with rules: UNI 9608 - UNI 10271 - DIN 12899 - ANSI Standard Z358.1 2004 - 93/42/CEE -

EN 15154-1.

PRODUCT FEATURES:

Floor grid made of galvanized steel, housed in a stainless steel frame. Consisting of a painted stainless steel pedal complete with coated metal tensioner, springs and connection screws.

Dimensions: 750 x 750 x H 120 mm. It allows the actioning of emergency eyewashes and showers. It is provided with side supports for floor fastening.

FIXING/INSTALLATION:

Connect the pedal actioning device to the eyewash/shower's opening valve by means of the tensioner and screws included and fasten it to the freestanding device.

MAINTENANCE:

Periodically check the correct fastening and condition of the product.

PRODUCT LISTING:

N. 1 floor grid.

PRODUCT PACKAGING:

Packing according to needs.
Weight: 24 kg

The above mentioned information cannot be considered as binding. Thermomat Saniline S.r.l. reserves the right to make technical and aesthetic changes without any prior notice.

ST_PRODOTTO: RICDL03	- 1	APPROVATO R.T.
REV.00 DEL 25/09/09		