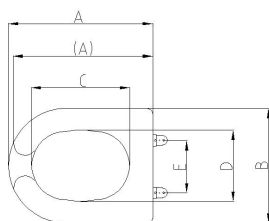


TECHNICAL DRAWING



| Art. | Vaso | A | B | C | D | E | Apertura frontale | Coperchio |
|-------------|------|-----|-----|-----|-----|----------------------|-------------------|-----------|
| 436-437-438 | 425 | 375 | 310 | 260 | 200 | 150 (con eccentrico) | NO | SI |

Misure in mm.

PHOTO



PRODUCT FAMILY: SANITARYWARE

CODE: 436

DESCRIPTION: Toilet seat with lid for children suitable for toilet art. 425. White colour.

APPROVALS/CERTIFICATIONS:

TUV system certification UNI EN ISO 9001:2008.

PRODUCT FEATURES:

Toilet seat with lid for children suitable for toilet art. 425. Chipboard core coated with cast polyester (thick. 2mm). Polyester coating, compared to superficial painting, offers a better resistance to wear, therefore an increased duration of the article. Complete with chrome-plated brass hinges. Through bolt fixing.

NB: EACH SEAT FITS A SPECIFIC MODEL OF TOILETS. IF MOUNTED ON OTHER TOILETS, IT COULD NOT ADAPT PERFECTLY, THUS

CAUSING THE HINGES TO BREAK. IT IS HIGHLY RECOMMENDED THAT YOU USE THE SEAT CORRESPONDING TO EACH TOILET. STANDARD SEATS ARE USED FOR TOILETS WITH MORE COMMON SHAPES. NEVERTHELESS, WE RECOMMEND CHECKING THE SHAPE AND DIMENSIONS BEFORE THE INSTALLATION.

FIXING/INSTALLATION:

Tightly secure to the toilet by means of the included fasteners, making sure that the fasteners are securely tightened to avoid backlashes. The front bumpers must lean against the toilet edge, the back ones must be 3-4 mm raised.

MAINTENANCE:

Check the correct fastening of the seat periodically. Avoid backlashes to the fasteners and incorrect movements, which could damage the hinges. Clean with water and soap or other suitable products, do not use abrasive or corrosive agents. Dry with a soft cloth.

PRODUCT COMPOSITION:

N° 1 Seat with lid - Chipboard, Cast Polyester
N° 2 Hinges - Chrome-plated brass
Bumpers - Linear polyethylene

TOLERANCES:

GENERAL TOLERANCES
±5% on all dimensions

PACKAGING OF THE PRODUCT:

Packed in cardboard box 380 x 555 x 55 mm.
Multiple packing (5 pcs) in individual cardboard boxes + 580 x 330 x 400 mm box.
Weight: 2,9 kg

The above mentioned information cannot be considered as binding. Thermomat Saniline Srl reserves the right to make technical and aesthetic changes without any prior notice.

| | |
|----------------------|-------------------|
| ST_PRODOTTO: 436 - 1 | APPROVATO R.T. |
| REV.00 DEL 25/09/09 | |

THERMOMAT SANILINE SRL

Via M. Curie, 7 - 46034 Borgo Virgilio (Mantova) ITALY

Tel. + 39 0376 4473

www.thermomat.com - e-mail: info@thermomat.com

