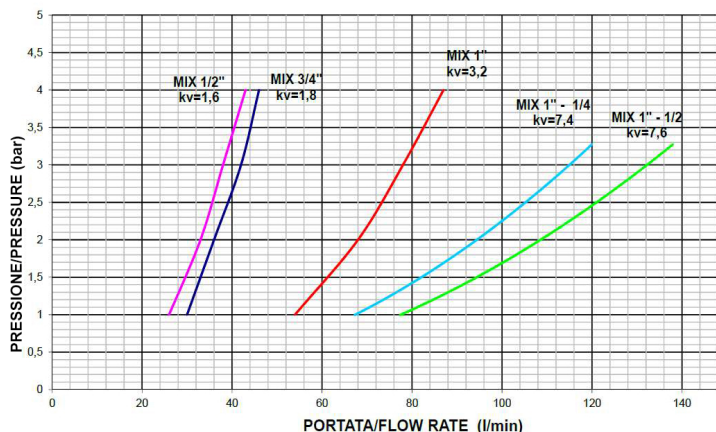
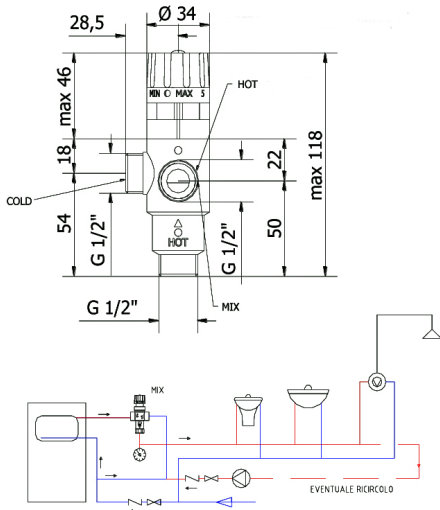


TECHNICAL DRAWING



PHOTO



**PRODUCT FAMILY:** THERMOSTATIC MIXER - MIX SOLAR SERIES  
**CODE:** TMT12MVTHSUN  
**DESCRIPTION:** THERMOSTATIC MIXER 1/2" MVTH FOR SOLAR PANELS

**HYDRAULIC PERFORMANCES:**

See the chart Pressure / Flow.  
 Anti Scald function: in the absence of cold water from the plant the mixer automatically closes the hot water inlet interrupting the supply output to avoid burns.  
 Designed to withstand peak temperatures of over 100°C.

**APPROVALS/CERTIFICATIONS:**

TUV certification UNI EN ISO 9001  
 Designed according to the main points of the UNI EN 1111.

**PRODUCT FEATURES:**

The thermostatic mixing valves regulate to a predetermined value the water temperature automatically by mixing the hot water and the cold water. It allows the maximum comfort, a considerable economy of water and energy, it avoids the risk of accidental burns. The mixer is factory set using cold water at 15°C and hot water at 65°C, 3 bar, so that the printed numbers correspond indicatively the temperatures reported in the table above.  
 Specifically designed for installation in systems with solar panels; actually in these plants in summer and with little withdrawal you can reach very high temperatures, next to 100°C, which may also cause safety issues.  
 The thermostatic mixing valves for solar ensure safety and efficiency to the system and they are designed to withstand peak temperatures of over 100°C.  
 The knob can be locked using the appropriate grain on the cap to prevent accidental tampering.  
 The inputs and the output have connection 1/2" G male and are located at 90° to each other, to reduce any problem of space.

**TECHNICAL DATA:**

Input connections: 1/2" male  
 Output connection: 1/2" male  
 Maximum pressure (static): 1,000 kPa (10 bar)  
 Working pressure (dynamic): 100 ÷ 500 kPa (1 to 5 Bar)  
 Maximum temperature of inlet temperature: 100°C  
 Setting range: 30 ÷ 65 °C  
 Control accuracy: ± 2 °C  
 Kv: 1,6 m³ / h  
 Knob with a locking device.

**FIXING/INSTALLATION:**

Always respect the connections:  
 HOT (H) = Hot water inlet  
 COLD (C) = cold water inlet  
 MIX = mixed water outlet  
 -If the pressure of hot and cold water are significantly different from each other check valves must be mounted on the inlets.  
 -If the water feeds containing corpuscles filters must be mounted.

**PRODUCT LISTING:**

Body in molded brass UNI EN 12165 CW617 N sandblasted and nickel plated  
 Shutter and internal organs in brass UNI EN 12164 CW617 N  
 O-RING in EPDM  
 Heat-sensitive wax element  
 Springs in Stainless steel AISI 302  
 Knob in Nylon PA6

**PACKAGING OF THE PRODUCT:**

Packing according to necessity.  
 Weight: 0.62 kg (without packaging).

The above mentioned information cannot be considered as binding. Thermomat S.r.l. reserves the right to make technical and aesthetic changes without any prior notice.

ST_PRODOTTO: TMT12MVTHSUN	APPROVATO - 1 R.T.
REV.03 DEL 09/09/19	